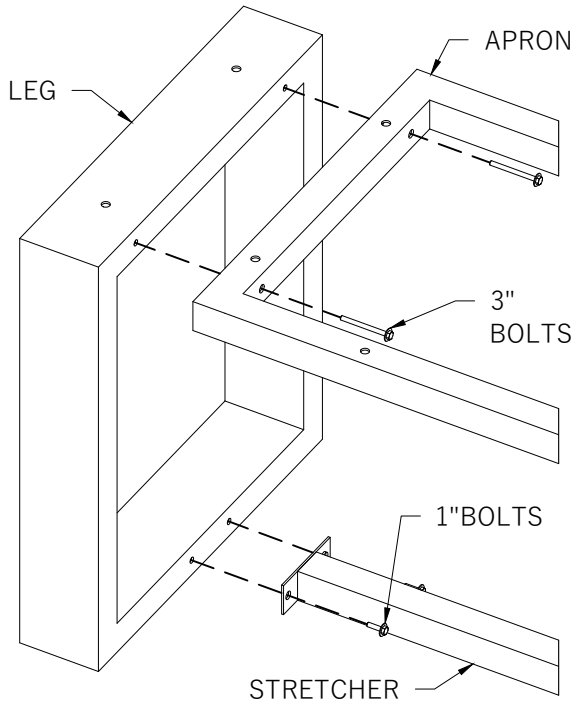
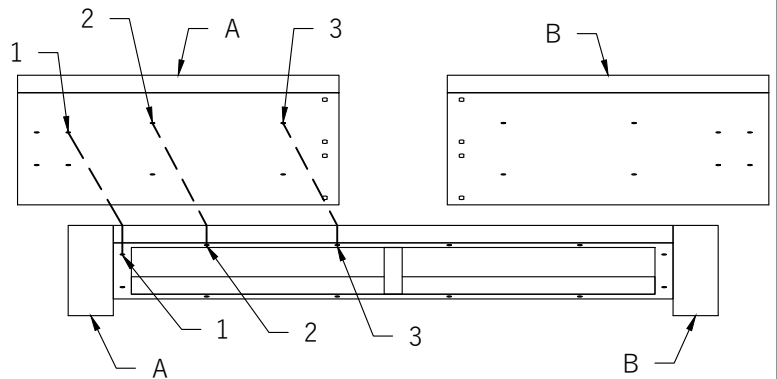


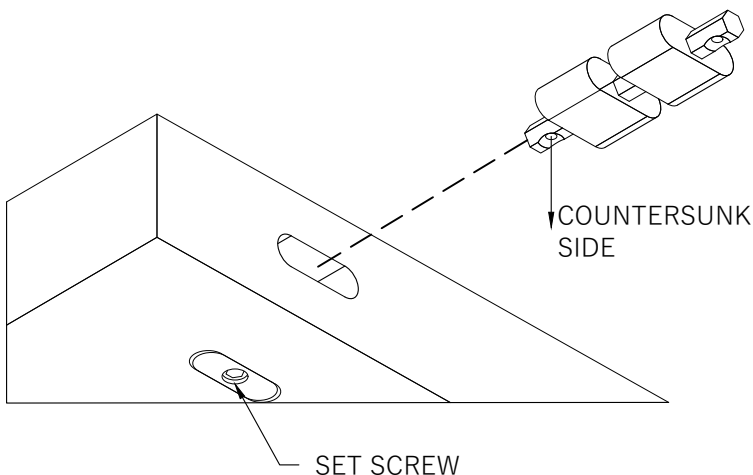
- 1** Assemble the base by matching the numbers or letters on each component to each other. **Three different size bolts are included.** 3" bolts: apron to leg. 2.5" bolts: base to top. 1" bolts: stretcher to leg.



- 2** Set all top components carefully on the base and match the corresponding numbers to each other as well as the hole numbers to the hole numbers on the base. Remove the tape from the bottom of the table components. **Do not assemble the top on the floor.**



- 3** Insert the steel rods into the holes containing the domino tight joint fastener with the **countersunk side towards the floor**. Tighten the set screws to hold the steel rod in place.



- 4** Insert wooden dominos into the remaining holes. Slide the table top components together and tighten the set screws on the remaining end. Bolt the top and base together by hand in case small adjustments are needed. Make any needed adjustments for alignment and **tighten all fasteners.**

